



MONTAGU MANSIONS

LONDON, W1U

£1,295,000
LEASEHOLD

New to the market is this spectacular two bedroom apartment, located within in Montagu Mansions which is a beautiful portered red brick mansion block located immediately behind Baker Street. The flat comprises a spacious reception room/dining room, separate fully fitted kitchen, 2 double bedrooms and 2 bathrooms (one en-suite). The property is offered in good decoration throughout with period features.

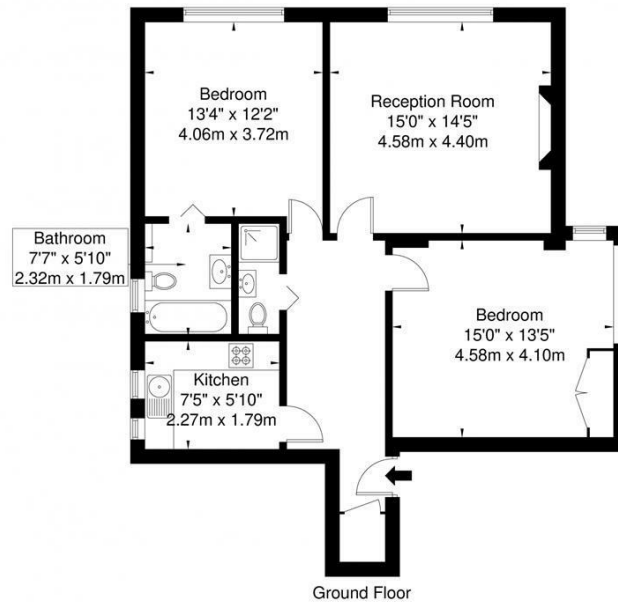
Moments from Baker Street and the very charming Marylebone High Street, the apartment benefits from incredible amenities nearby and numerous transport links (Marylebone Station, Baker St Station, several bus links). Several high end restaurants and retailers nearby. Moments from the hot spots of Central London.

Viewings are highly recommended.

PMP | INTERNATIONAL

Montagu Mansions, W1U 6LG

Approx. Gross Internal Area = 81.9 sq m / 881 sq ft



Ref

Copyright

B L E U
P L A N

Disclaimer : Floor plan measurements are approximate and are for illustrative purposes only
While we do not doubt the floor plan accuracy and completeness, you or your advisors should
conduct a careful, independent investigation of the property in respect of monetary valuation



Energy Efficiency Rating		
	Current	Potential
Very energy efficient - lower running costs		
(92 plus) A		
(81-91) B		
(69-80) C		78
(55-68) D	58	
(39-54) E		
(21-38) F		
(1-20) G		
Not energy efficient - higher running costs		
England & Wales	EU Directive 2002/91/EC	

Agents Note: Whilst every care has been taken to prepare these particulars, they are for guidance purposes only. All measurements are approximate and are for general guidance purposes only and whilst every care has been taken to ensure their accuracy, they should not be relied upon and potential buyers/tenants are advised to recheck the measurements

London
PMP International
94 Belsize Lane
Belsize Park
London
NW3 5BE

020 7701 2878
info@pmpi.co.uk
www.pmpi.co.uk

PMP | INTERNATIONAL